

Symantec BindView™ Policy Manager

Lowering the cost of compliance through automated assessment of IT policies against multiple regulations and best practices.

Overview

Recent research by a major analyst firm indicates that compliance with multiple regulations will claim as much as 15 percent of IT budgets in 2006. The research points out that companies that have invested in one-off solutions for each regulatory challenge they face, will spend 10 times more on IT solutions for compliance than those organizations that develop a single solution to manage multiple regulatory requirements.

Symantec BindView Policy Manager reduces the increasing cost of IT compliance for multiple regulations by providing automated policy management that defines and disseminates policy throughout the organization. Symantec BindView Policy Manager maps created policy to best practice frameworks and multiple regulations. In addition, it supplies proof of compliance to policy through integration with Symantec and third-party infrastructure assessment software.

Features and benefits

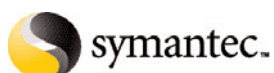
Satisfies regulatory mandates that require employee awareness by enabling automated policy dissemination

- Creates new policies from scratch, leveraging pre-written sample policies, or brings existing policies into the database
- Enables review, approval, and version control of policies before going live

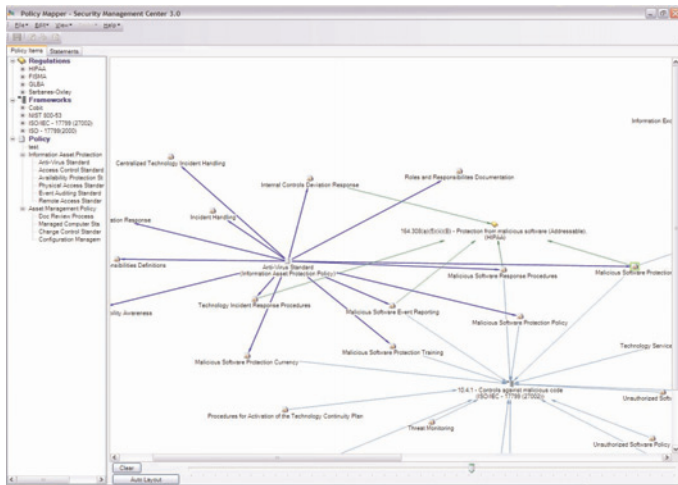
- Captures user approvals, user exception requests, and clarification requests for live policy
- Reports and trends policy acceptance by users, including rates of policy adoption

Reduces redundant work by assessing compliance across multiple regulations using a single set of universal controls

- Performs compliance analysis across regulations by leveraging more than 1,500 control statements that provide pre-designed mappings between best practice frameworks and multiple regulations. These control statements help translate vague regulatory/framework objectives into actionable policy.
- Uses a convenient drag-and-drop interface to link written policy to appropriate frameworks and regulations
- Supports multiple regulations including SOX, HIPAA, GLBA, FISMA
- Supports best practice frameworks including COBIT, ISO 17799, NIST SP800-53



Data Sheet: Security Compliance Symantec™ BindView Policy Manager



Symantec BindView Policy Manager's unique mapping interface helps to visually review and assess policy coverage through common control statements that apply to multiple regulations.

Ensures policy coverage across all regulatory and best practice requirements

- Maps created policy to pre-written control statements that are already mapped to appropriate regulations and frameworks
- Reports on policy coverage gaps according to regulation or framework
- Visually assesses and displays policy coverage through intuitive, policy-linking interface

Analyzes policy management activities through advanced reporting

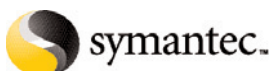
- Leverages out-of-the-box reports to help determine policy coverage, policy awareness and policy efficacy

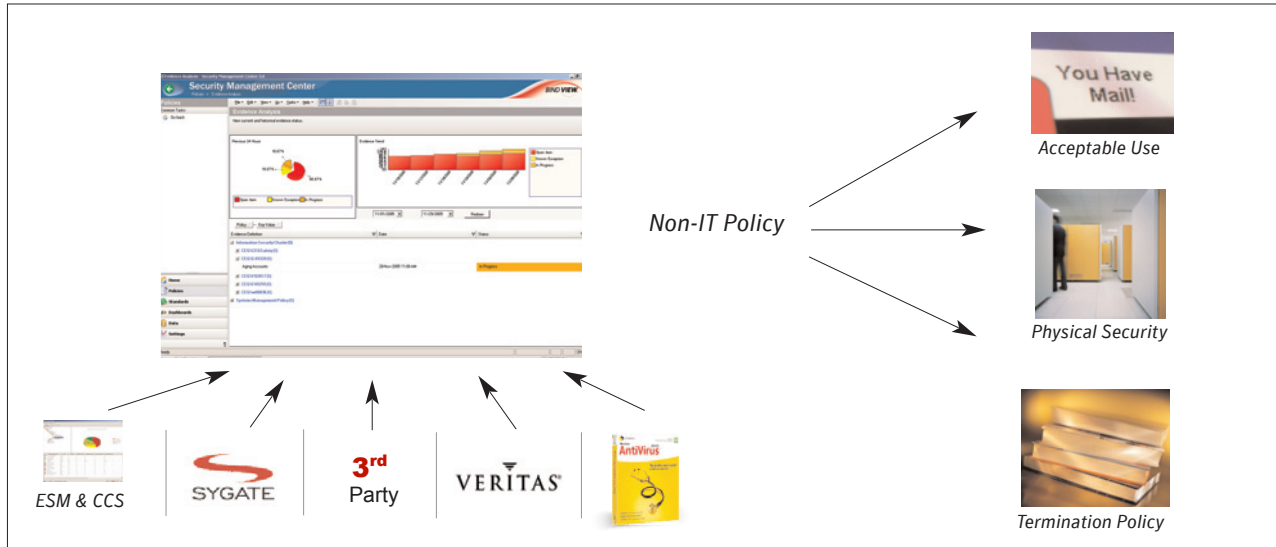
Assesses compliance to written policy through integration with management software

- Maps written policy to compliance 'audit evidence feeds' to show proof of compliance
- Leverages out-of-the-box integration with Symantec Control Compliance Suite to automatically assess policy compliance across servers and databases
- Easily integrates other management products from Symantec or third-party products to collect compliance information across all IT infrastructure components
- Tracks and trends compliance levels over time per policy

Demonstrate due care toward achieving IT policy compliance

- Provides auditors with a single interface to evaluate IT compliance posture
- Meets regulatory obligations for policy documentation, implementation of policy awareness program, and policy compliance assessment activities in a single solution
- Leverages pre-written control statements to translate vague regulatory and framework guidelines into actionable policy.





Symantec Policy Manager automates compliance assessment by integrating multiple data feeds and generating reports for management and auditors through a single interface.

Endorsements

- IDC White Paper: *Optimizing Your IT Controls Environment for Compliance with Multiple Regulations*, by Charles Kolodgy, December 2005

Technical specifications

Symantec Policy Manager

Components & Systems Requirements

Client: minimum requirements

- 1.2 GHz CPU
- 512 MB RAM
- Monitor set to 1024x768 pixels or greater
- One of the following versions of Microsoft Windows:
 - Microsoft Windows 2000 Professional SP4 or later
 - Microsoft Windows 2000 Server SP4 or later
 - Microsoft Windows 2000 Advanced Server SP4 or later
 - Microsoft Windows XP or later
 - Microsoft Windows Server 2003 or later

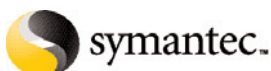
Server: minimum hardware requirements

- 3.0 GHz CPU
- 1 GB RAM
- 1 GB free disk space
- Monitor resolution set to 1024x768 pixels or greater

Server: minimum software requirements

One of the following versions of Microsoft Windows:

- Microsoft Windows Server 2003 SP1 or later
- Microsoft Windows Server 2000 SP4 or later
- Microsoft Windows 2000 Advanced Server SP4 or later
- MDAC 2.7 or later
- One or more NTFS Volumes
- Microsoft Windows Scripting Host v5.6 or later
- .NET Framework 1.1 Service Pack 1 or later
- Microsoft Internet Explorer v6.0 or later



More information

Visit our Web site

<http://enterprisesecurity.symantec.com>

To speak with a Product Specialist in the U.S.

Call toll-free (800) 745-6054

To speak with a Product Specialist outside the U.S.

Symantec has operations in 40 countries. For specific country offices and contact numbers, please visit our Web site.

About Symantec

Symantec is the world leader in information security providing a broad range of software, appliances and services designed to help individuals, small and mid-sized businesses, and large enterprises secure and manage their IT infrastructure. Symantec's Norton™ brand of products is the worldwide leader in consumer security and problem-solving solutions providing solutions to help individuals and enterprises assure the security, availability, and integrity of their information. Headquartered in Cupertino, California, Symantec has operations in 40 countries. More information is available at www.symantec.com.

Symantec Corporation World Headquarters

20330 Stevens Creek Blvd.

Cupertino, CA 95014 USA

(408) 517-8000

(800) 721-3934

www.symantec.com

